

Downtown Retail Building

669 Higuera St. ,San Luis Obispo, CA

+/- 2,200 up to +/- 9,465 SF

FOR LEASE



Contact:

Steve McCarty
mccarty@mccartydavis.com
805.431.2671
CalBRE#: 00977930

Steve Davis
davis@mccartydavis.com
805.704.5727
CalBRE#: 01843738

www.McCartyDavis.com
641 Higuera Street, Suite 201
San Luis Obispo, CA 93401
805.543.1801
Updated: 122/2026

McCarty  Davis
Commercial Real Estate

Property Overview

McCarty Davis is pleased to offer the opportunity to lease the Davidson's building at 669 Higuera Street in downtown San Luis Obispo. The building is comprised of three storefronts and has alley access and parking in the rear. Owned by the same family for almost 90 years, this is the first time on the market since the 1930's. The current redevelopment in the City of San Luis Obispo is expanding the downtown core and 669 Higuera is at the epicenter of that new vibrancy and renewal.

Property Facts

Three store fronts that can be leased individually or together:

- Suite A – 4,340 sq. ft., plus mezzanine
- Suite B - 2,200 sq. ft., plus mezzanine
- Suite C – 2,925 sq. ft.

16' open wood ceilings with mezzanine removed in the front of the units

Zoning is Downtown Commercial

All storefronts have rear alley access

Financials

Lease Rate: Negotiable

Additional Info.

Suites may be leased separately or together.



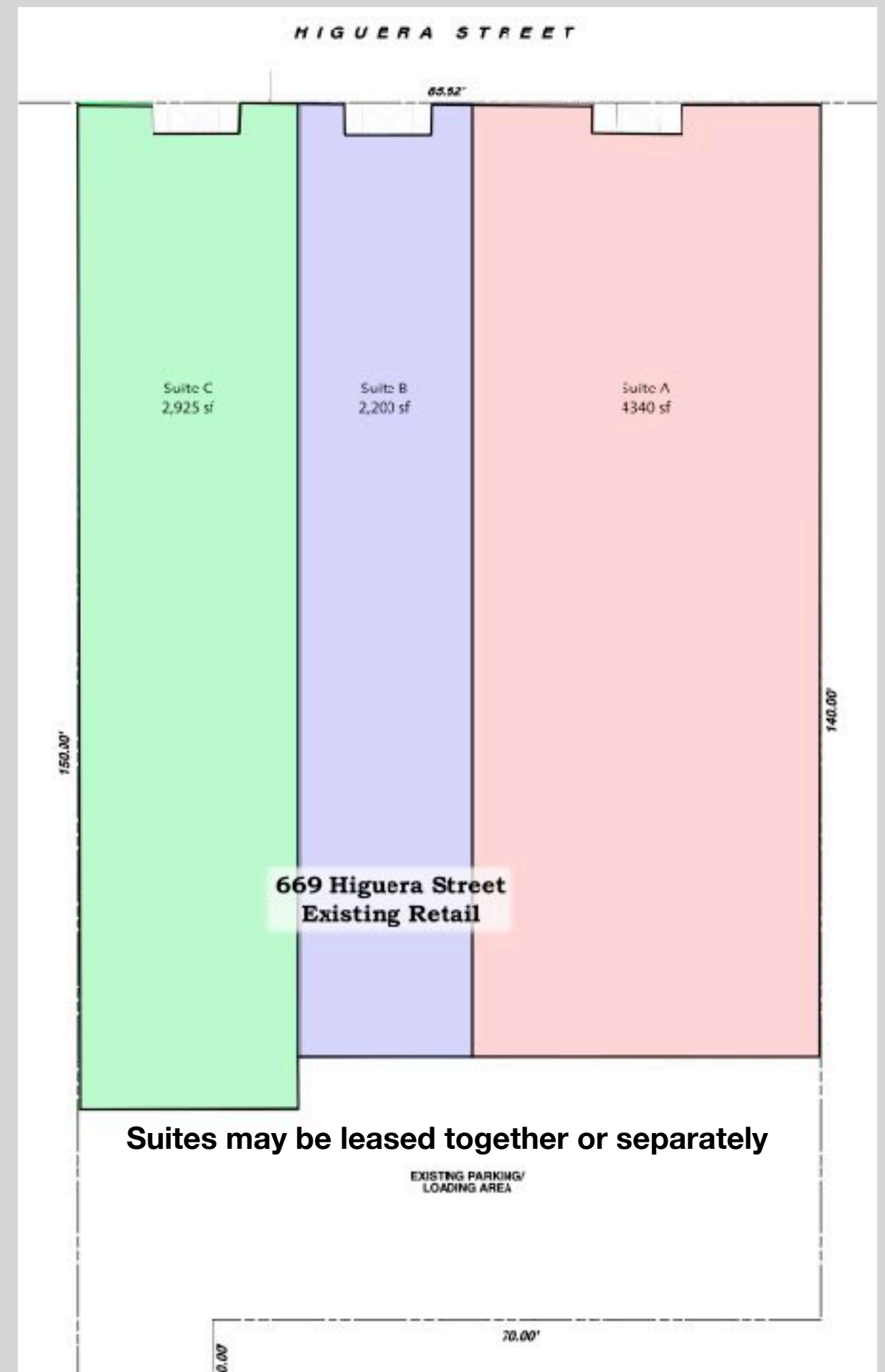
Contact: Steve McCarty
mccarty@mccartydavis.com
805.431.2671
CalBRE#: 00977930

Steve Davis
davis@mccartydavis.com
805.704.5727
CalBRE#: 01843738

www.McCartyDavis.com
641 Higuera Street, Suite 201
San Luis Obispo, CA 93401
805.543.1801
Updated: 122/2026

McCarty  **Davis**
Commercial Real Estate

669 Higuera St.	
Overall Property Description:	APN: 002-422-019 Total Square Footage: 13, 615 Total Ground Floor Square Footage: 9,465 Total Mezzanine Square Footage: 4,150 Rear Parking Spaces: 6
Unit A:	Ground Floor: 4,340 sq ft Mezzanine: 2,550 sq ft Total Floor Area: 6,890 sq ft Rear Door Access: 12' wide
Unit B:	Ground Floor: 2,200 sq ft Mezzanine: 1,600 sq ft Total Floor Area: 3,800 sq ft Rear Door Access: 8' wide
Unit C:	Ground Floor: 2,925 Mezzanine: none Total Floor Area: 2,925 sq ft Rear Door Access: 10' wide



Contact: Steve McCarty
mccarty@mccartydavis.com
805.431.2671
CalBRE#: 00977930

Steve Davis
davis@mccartydavis.com
805.704.5727
CalBRE#: 01843738

www.McCartyDavis.com
641 Higuera Street, Suite 201
San Luis Obispo, CA 93401
805.543.1801
Updated: 122/2026

McCarty  **Davis**
Commercial Real Estate



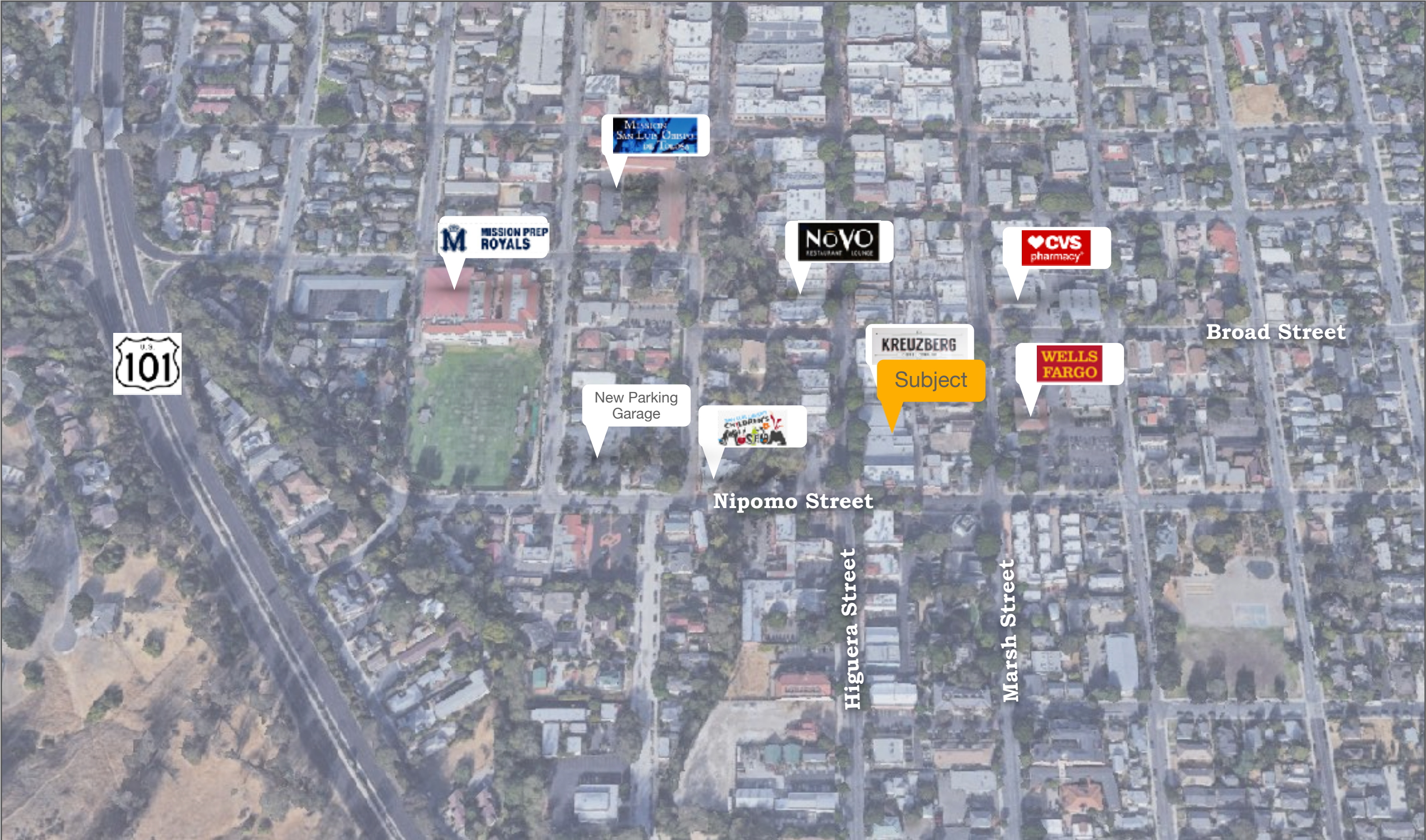
Contact: Steve McCarty
mccarty@mccartydavis.com
805.431.2671
CalBRE#: 00977930

Steve Davis
davis@mccartydavis.com
805.704.5727
CalBRE#: 01843738

www.McCartyDavis.com
641 Higuera Street, Suite 201
San Luis Obispo, CA 93401
805.543.1801
Updated: 122/2026

McCarty ♦ **Davis**
Commercial Real Estate

669 Higuera Street Locale



Contact: Steve McCarty
mccarty@mccartydavis.com
805.431.2671
CalBRE#: 00977930

Steve Davis
davis@mccartydavis.com
805.704.5727
CalBRE#: 01843738

www.McCartyDavis.com
641 Higuera Street, Suite 201
San Luis Obispo, CA 93401
805.543.1801
Updated: 122/2026

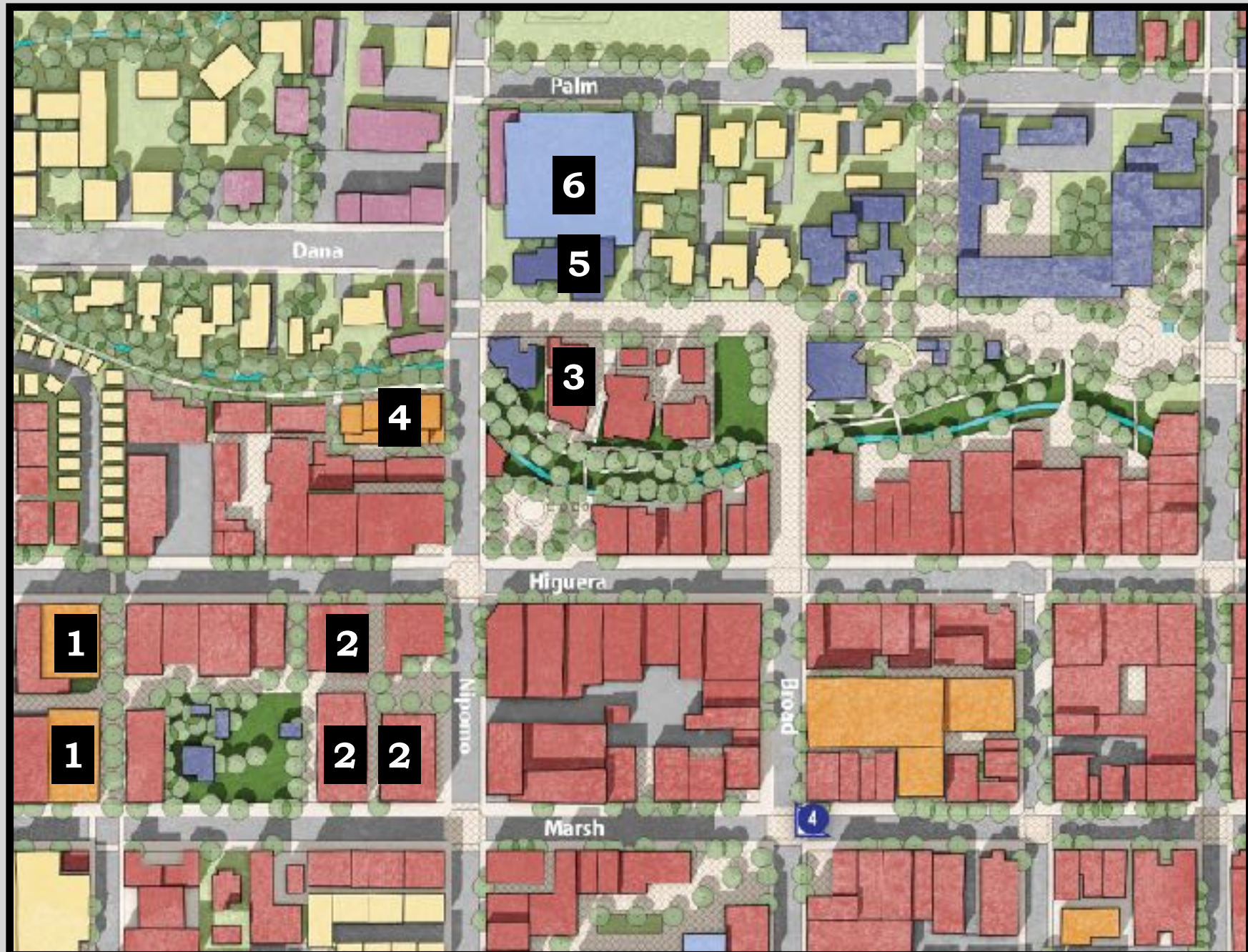
McCarty  Davis
Commercial Real Estate

Development Projects Near 669 Higuera Street

1: 545 Higuera Mixed-Use:
 Mixed-use project consists of four-story structure with +/- 4,649 sq. ft. of commercial/retail space and 64 residential units.



2: San Luis Square: 570 Higuera Street
 Located off Marsh and Nipomo. Development of a new mixed-use project that includes three, four-story structures with +/- 19,792 sq. ft. of commercial space, 63 residential units, 36 hotel rooms, and a two-level underground parking garage with 136 parking spaces.



3: Monterey Place:
 Located between Broad and Nipomo. Development of a mixed use project consisting of 29 residential units, a 3-room bed and breakfast, +/- 12,255 sq. ft. of commercial/retail space, and a +/- 5,710 sq. ft. parking garage.

4: Lofts at the Creamery:
 Located off Higuera, just past Nipomo. A four-story mixed-use project consisting of 36 residential dwellings and 68 sq. ft. of commercial space.



6: Palm Nipomo Parking Garage:
 The Cultural Arts District Parking Structure. Located off Palm and Nipomo. Development project consisting of a five-story, public parking garage and 396 spaces.



5: SLO Repertory Theatre
 Located off Palm and Nipomo. Development consisting of two-story structure with +/- 23,344 sq. ft. of commercial space for the SLO Repertory Theatre.



Contact: Steve McCarty
mccarty@mccartydavis.com
 805.431.2671
 CalBRE#: 00977930

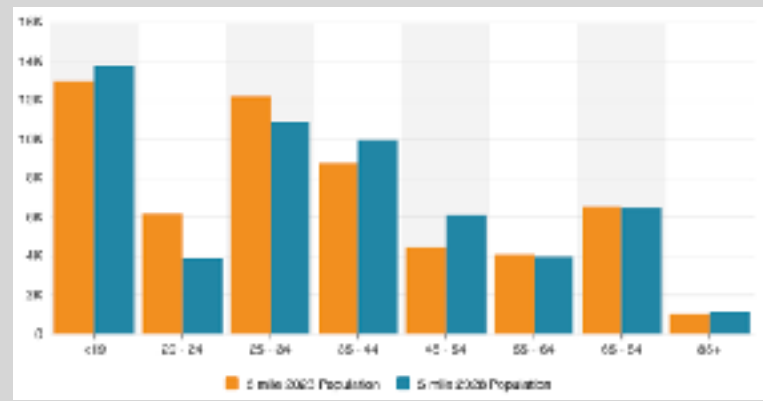
Steve Davis
davis@mccartydavis.com
 805.704.5727
 CalBRE#: 01843738

www.McCartyDavis.com
 641 Higuera Street, Suite 201
 San Luis Obispo, CA 93401
 805.543.1801
 Updated: 122/2026

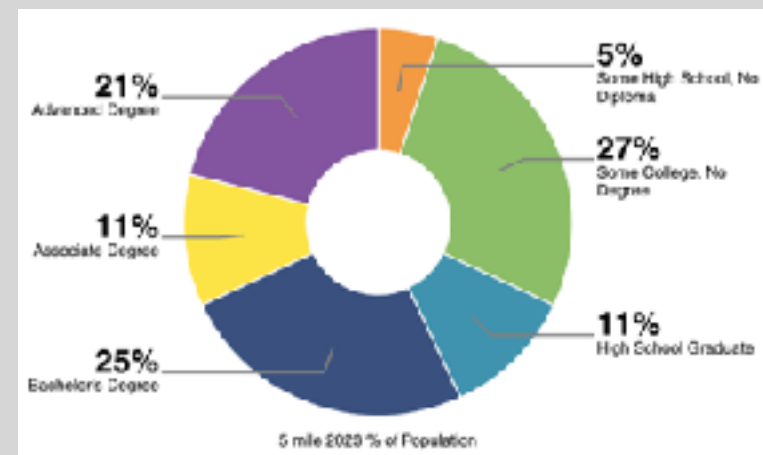


Demographics

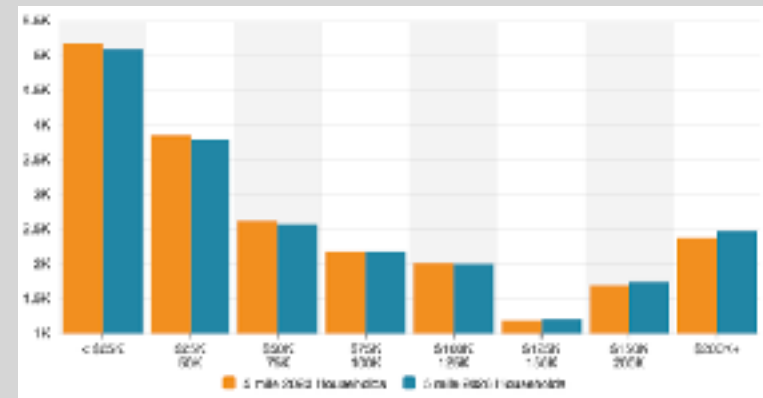
Population By Age



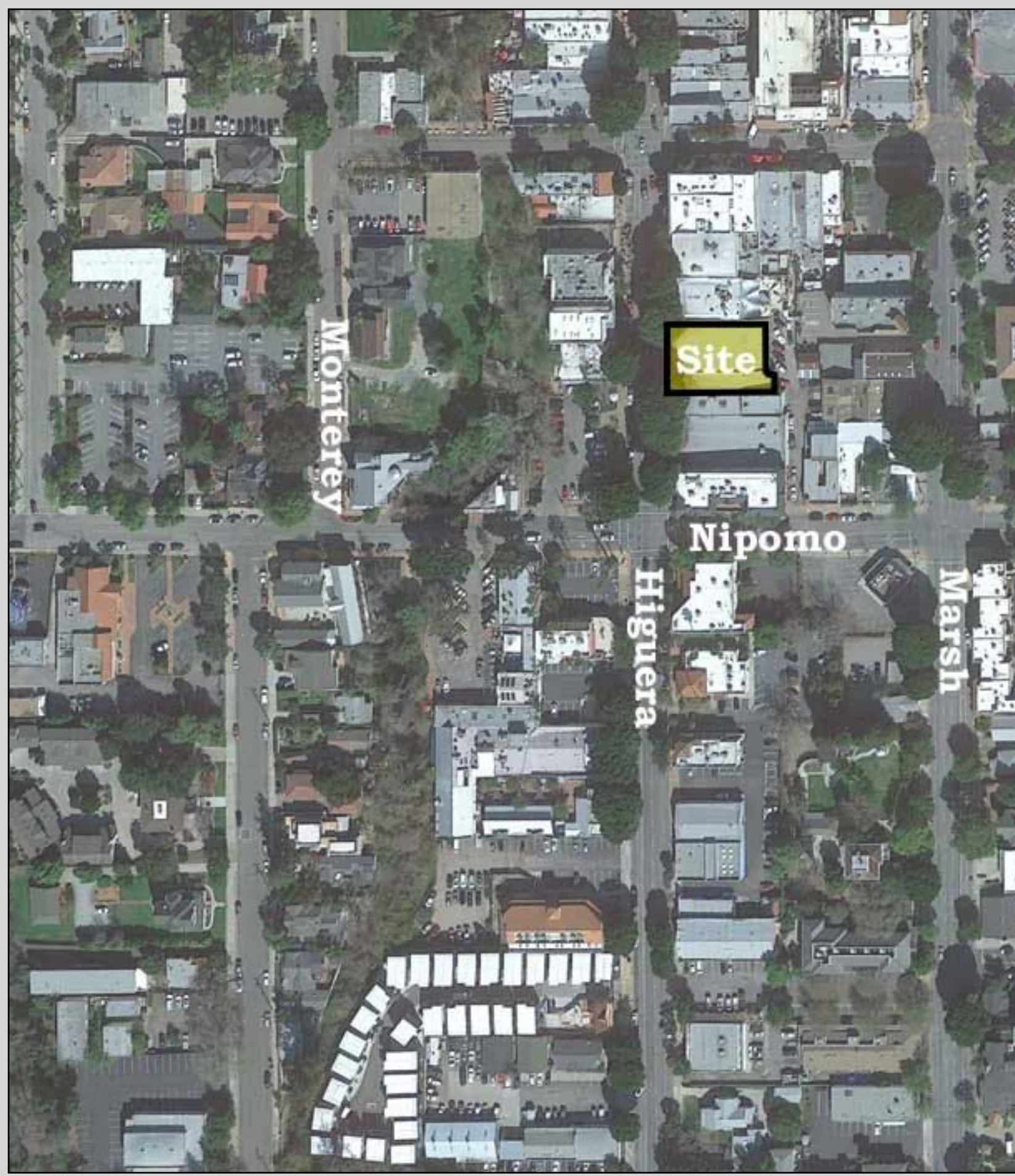
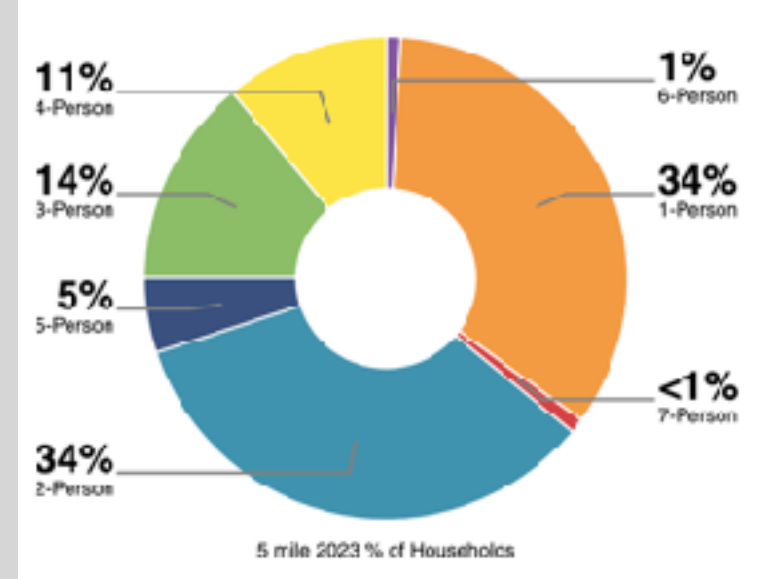
Educational Attainment



Household Income



Household Size



Contact: Steve McCarty
 mccarty@mccartydavis.com
 805.431.2671
 CalBRE#: 00977930

Steve Davis
 davis@mccartydavis.com
 805.704.5727
 CalBRE#: 01843738

www.McCartyDavis.com
 641 Higuera Street, Suite 201
 San Luis Obispo, CA 93401
 805.543.1801
 Updated: 122/2026

McCarty ♦ Davis
 Commercial Real Estate

For More Information

To receive more information please call or email us. We look forward to talking to you.



The information contained herein has been obtained from the owner of the property or from other sources deemed reliable. We have no reason to doubt its accuracy, but we do not guarantee it.

Contact: Steve McCarty
mccarty@mccartydavis.com
805.431.2671
CalBRE#: 00977930

Steve Davis
davis@mccartydavis.com
805.704.5727
CalBRE#: 01843738

www.McCartyDavis.com
641 Higuera Street, Suite 201
San Luis Obispo, CA 93401
805.543.1801
Updated: 122/2026

McCarty  **Davis**
Commercial Real Estate