

**NNN Leased Investment**  
**2450 Ramada Dr., Paso Robles, CA**  
**6% Cap Rate**  
**FOR SALE**  
**PRICE IMPROVEMENT**



Contact: Steve McCarty  
[mccarty@mccartydavis.com](mailto:mccarty@mccartydavis.com)  
805.431.2671  
CalBRE#: 00977930

Steve Davis  
[davis@mccartydavis.com](mailto:davis@mccartydavis.com)  
805.704.5727  
CalBRE#: 01843738

[www.McCartyDavis.com](http://www.McCartyDavis.com)  
641 Higuera Street, Suite 201  
San Luis Obispo, CA 93401  
805.543.1801  
Updated: 5/15/2026

**McCarty**  **Davis**  
Commercial Real Estate

## Property Overview

McCarty Davis is pleased to offer the opportunity to purchase 2450 Ramada Dr. in Paso Robles as a leased investment. The property is NNN leased to Farm Supply, a Central Coast farmer-owned agriculture cooperative, with a new 10 year term. Located on Ramada Dr. with great visibility from Highway 101.

## Property Information:

<b>Building Sizes:</b> +/- 27,096 SF overall Total square footage comprised of 3 buildings: (Reference image in the upper right for building identification)
● Main Retail Building - 10,928 SF ( additional 3,528 SF outdoor covered space)
● Warehouse 1 - 8,640 SF
● Warehouse 2 - 4,000 SF
<b>Parcel Size:</b> +/- 2.82 AC
<b>APN:</b> 040-143-051
<b>Zoning:</b> CS (Commercial Service) County of San Luis Obispo
<b>Occupancy:</b> 100% Leased to Farm Supply
<b>Lease Type:</b> Single-Tenant Ten-Year NNN Lease
<b>NOI:</b> \$360,000

## Financials

Sale Price: **Now \$6,000,000 (6% Cap Rate)** ~~\$6,250,000~~



Contact: Steve McCarty  
[mccarty@mccartydavis.com](mailto:mccarty@mccartydavis.com)  
805.431.2671  
CalBRE#: 00977930

Steve Davis  
[davis@mccartydavis.com](mailto:davis@mccartydavis.com)  
805.704.5727  
CalBRE#: 01843738

[www.McCartyDavis.com](http://www.McCartyDavis.com)  
641 Higuera Street, Suite 201  
San Luis Obispo, CA 93401  
805.543.1801  
Updated: 5/15/2026

**McCarty**  **Davis**  
Commercial Real Estate

**Ramada Dr.**



Contact:

Steve McCarty  
[mccarty@mccartydavis.com](mailto:mccarty@mccartydavis.com)  
805.431.2671  
CalBRE#: 00977930

Steve Davis  
[davis@mccartydavis.com](mailto:davis@mccartydavis.com)  
805.704.5727  
CalBRE#: 01843738

[www.McCartyDavis.com](http://www.McCartyDavis.com)  
641 Higuera Street, Suite 201  
San Luis Obispo, CA 93401  
805.543.1801  
Updated: 5/15/2026

**McCarty**  **Davis**  
Commercial Real Estate

# TENANT PROFILE



Founded in 1950, Farm Supply Company is dedicated to serving the farm, home, and ranch needs of California's Central Coast. The company offers a wide range of products, including irrigation, pet supplies, equine and livestock feed, and lawn and garden essentials.

Farm Supply is a farmer-owned cooperative with over 2,000 members and is a market leader across the Central Coast. The company operates retail locations in San Luis Obispo, Paso Robles, Arroyo Grande, Santa Maria, and Buellton, and now also provides customers the ability to shop online.

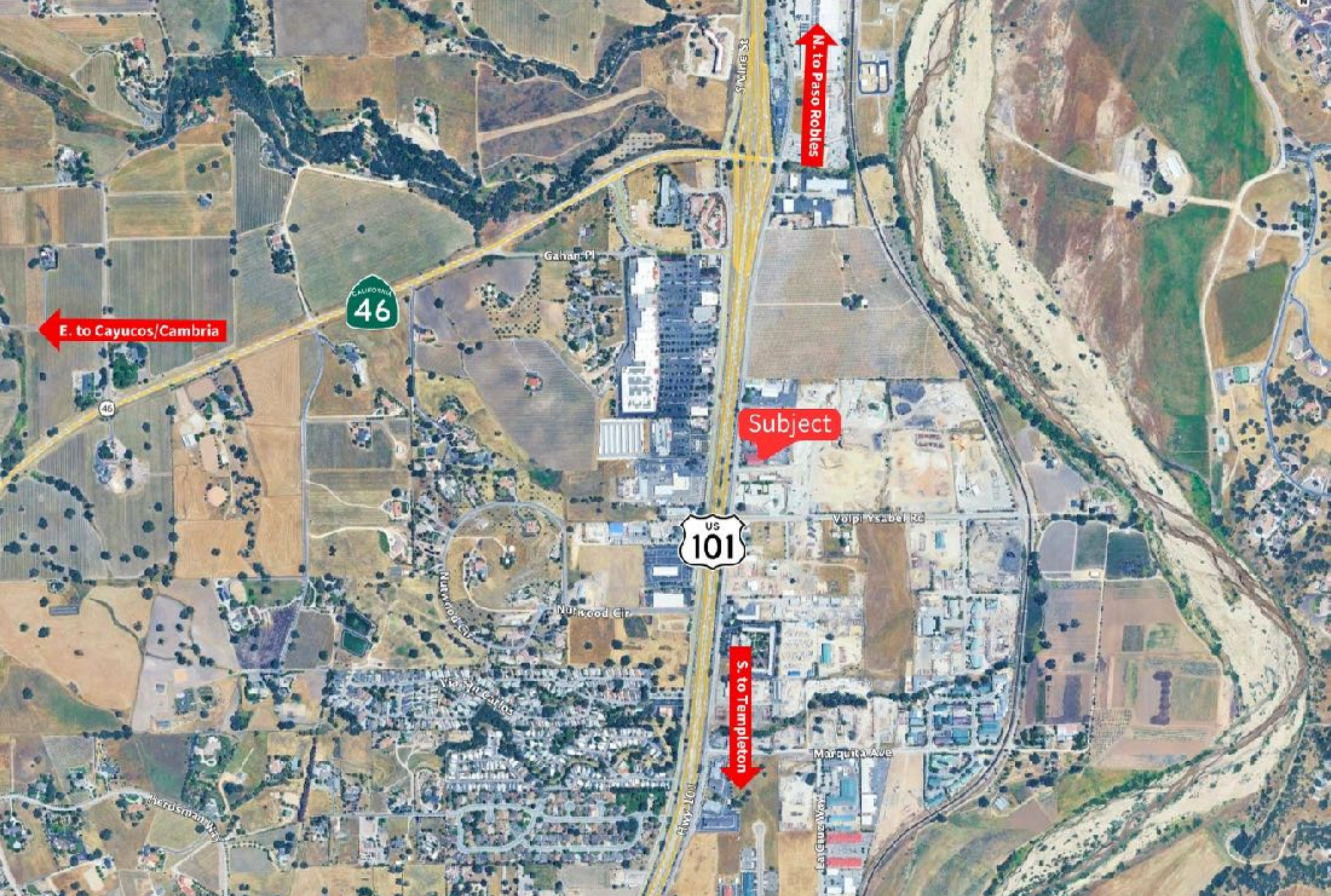


Contact: Steve McCarty  
[mccarty@mccartydavis.com](mailto:mccarty@mccartydavis.com)  
805.431.2671  
CalBRE#: 00977930

Steve Davis  
[davis@mccartydavis.com](mailto:davis@mccartydavis.com)  
805.704.5727  
CalBRE#: 01843738

[www.McCartyDavis.com](http://www.McCartyDavis.com)  
641 Higuera Street, Suite 201  
San Luis Obispo, CA 93401  
805.543.1801  
Updated: 5/15/2026

**McCarty** ♦ **Davis**  
Commercial Real Estate



Contact:

Steve McCarty  
[mccarty@mccartydavis.com](mailto:mccarty@mccartydavis.com)  
805.431.2671  
CalBRE#: 00977930

Steve Davis  
[davis@mccartydavis.com](mailto:davis@mccartydavis.com)  
805.704.5727  
CalBRE#: 01843738

[www.McCartyDavis.com](http://www.McCartyDavis.com)  
641 Higuera Street, Suite 201  
San Luis Obispo, CA 93401  
805.543.1801  
Updated: 5/15/2026

**McCarty**  **Davis**  
Commercial Real Estate

**For More Information**

To receive more information please call or email us. Our contact information is below and we look forward to talking to you.



*The information contained herein has been obtained from the owner of the property or from other sources deemed reliable. We have no reason to doubt its accuracy, but we do not guarantee it.*

Contact: Steve McCarty  
[mccarty@mccartydavis.com](mailto:mccarty@mccartydavis.com)  
805.431.2671  
CalBRE#: 00977930

Steve Davis  
[davis@mccartydavis.com](mailto:davis@mccartydavis.com)  
805.704.5727  
CalBRE#: 01843738

[www.McCartyDavis.com](http://www.McCartyDavis.com)  
641 Higuera Street, Suite 201  
San Luis Obispo, CA 93401  
805.543.1801  
Updated: 5/15/2026

**McCarty  Davis**  
Commercial Real Estate