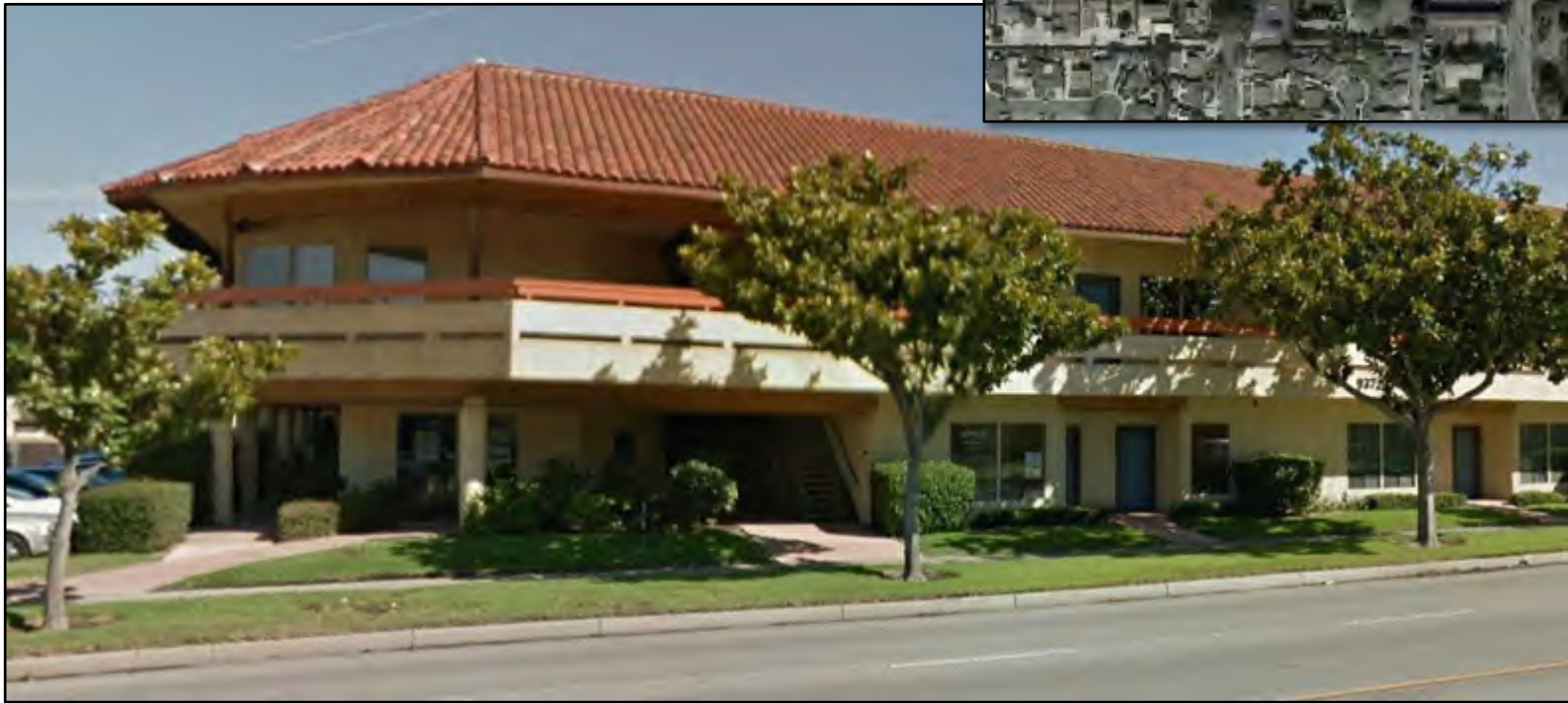


- Two adjacent suites currently functioning as one: 2,760 sq. ft. total
- Suite 201; 1,674 sq. ft., Suite 202; 1086 sq. ft.
- Easy access and close to US 101 and Marian Health Center
- Street signage
- Shared ample parking
- \$550,000



Well located office condominium for sale in Santa Maria. Located on Main Street, just west of US 101, this property has great access and parking. Both units currently function as one office. The office can be divided into two suites with minor modifications.

Parcel Characteristics	
APN:	121-430-009, 121-430-010
Legal Description:	Per title report
Land Use Zone:	CPO – Commercial Professional Office
Gross Square Feet	+/- 2,760
Parking:	As part of common area and shared with other suites in the building
Utilities:	City water and sewer

