

McCarty ❖ Davis

**FOR LEASE: 1,132 sq. ft. of Medical Office
1551 Bishop Street, Suite 250, San Luis Obispo**

- 1,132 sq. ft. of medical office space available for lease
- Built out as medical office
- Zoning: Office
- Ample shared parking
- \$2.36/sq. ft., NNN
- Available June 2019



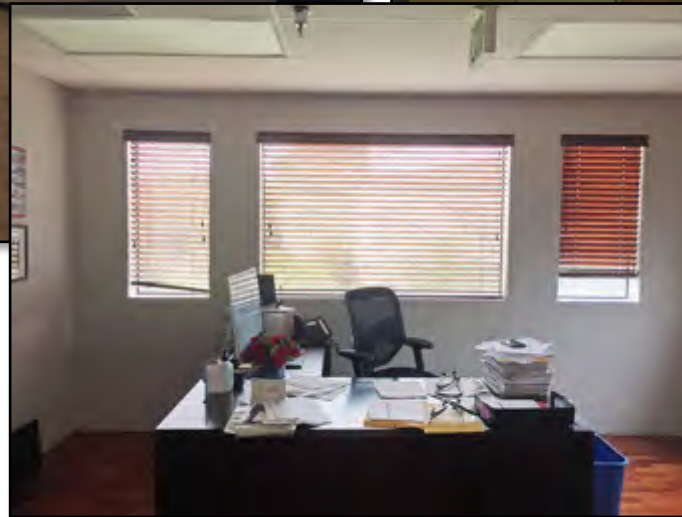
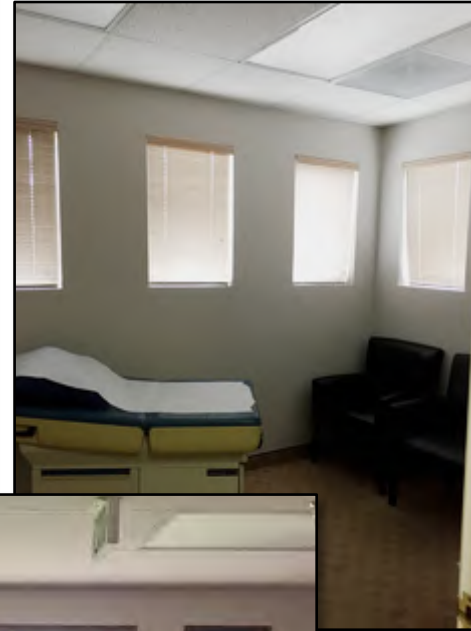
McCarty ❖ Davis
Commercial Real Estate

Steve McCarty
mccarty@mccartydavis.com
CalBRE#: 00977930

Steve Davis
davis@mccartydavis.com
CalBRE#: 01843738

641 Higuera Street, Suite 201
San Luis Obispo, CA 93401
805.543.1801
www.mccartydavis.com

FOR LEASE: 1,132 sq. ft. of Medical Office
1551 Bishop Street, Suite 250, San Luis Obispo



Built out medical suite situated in the Bishop Street Medical Campus. The suite includes waiting room & reception, two exam rooms, two private offices, & kitchenette/ record storage. Ample shared parking available.

Parcel Characteristics	
APN:	003-703-057
Legal Description:	Per title report
Land Use Zone:	Office
Gross Square Feet:	1,132 sq. ft.
Parking:	Shared ample parking

