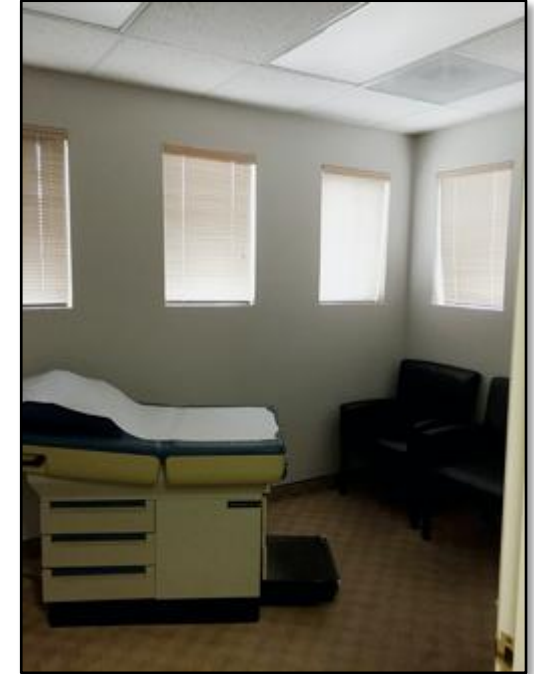
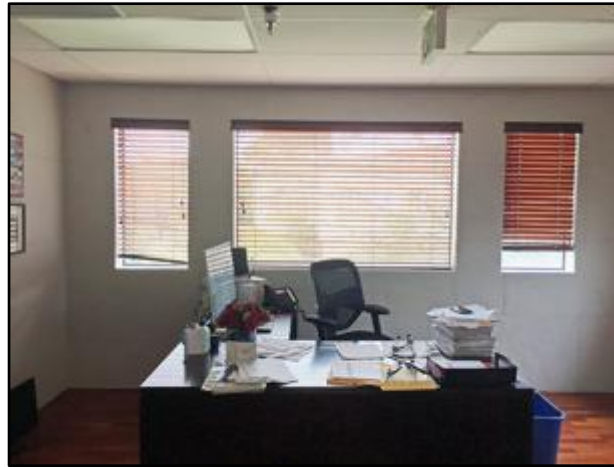


### Bishop Street Medical Campus

- 1,132 sq. ft. of medical office space
- Waiting room and reception area
- Two exam rooms; two private offices
- Kitchenette / record storage
- Ample shared parking
- Lease rate: \$2.36 sq. ft., NNN
- Sale price: \$520,000



**FOR SALE or LEASE: 1,132 sq. ft. of Medical Office  
1551 Bishop Street, Suite 250, San Luis Obispo**



#### Parcel Characteristics

APN:	003-703-057
Legal Description:	Per title report
Land Use Zone:	Office
Gross Square Feet:	1,132 sq. ft.
Parking:	Shared ample parking

