

# McCarty Davis

**FOR LEASE: +/- 1,076 sq. ft. of Professional Office  
1010 South Broadway, Suite E, Santa Maria, CA 93454**

- +/- 1,076 sq. ft. of finished commercial office space for lease
- Three offices, breakroom and large common work area
- Shared restrooms
- Excellent central location in the heart of Santa Maria
- Lease rate: \$1.50/sq. ft., Gross



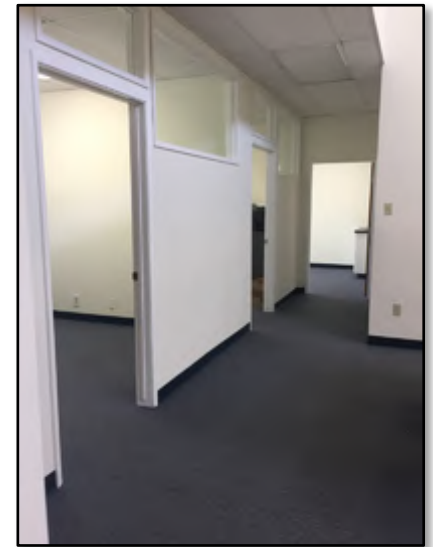
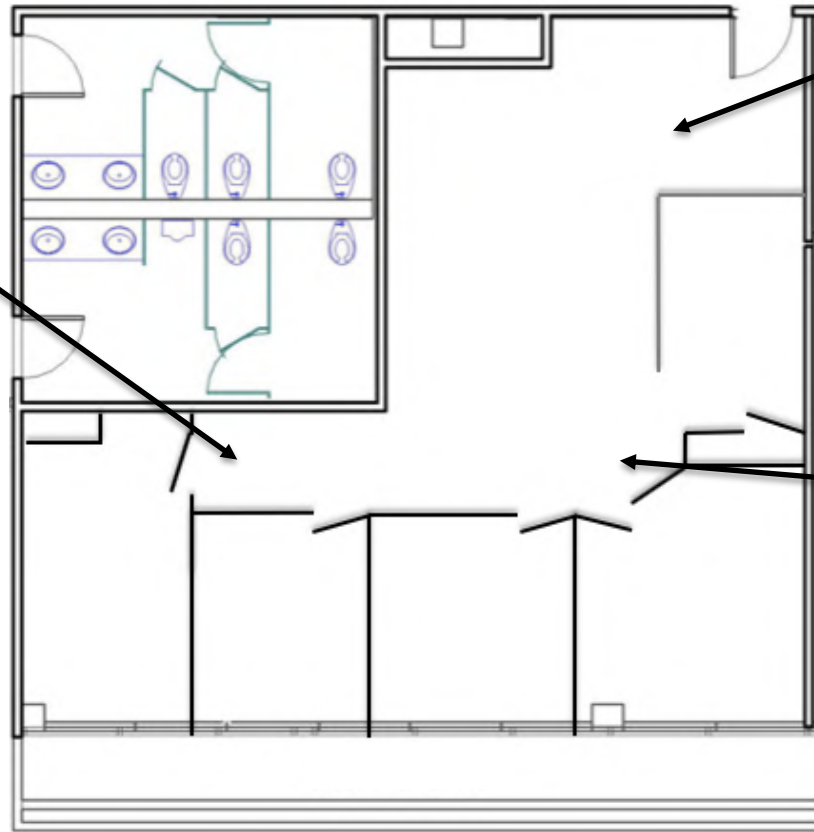
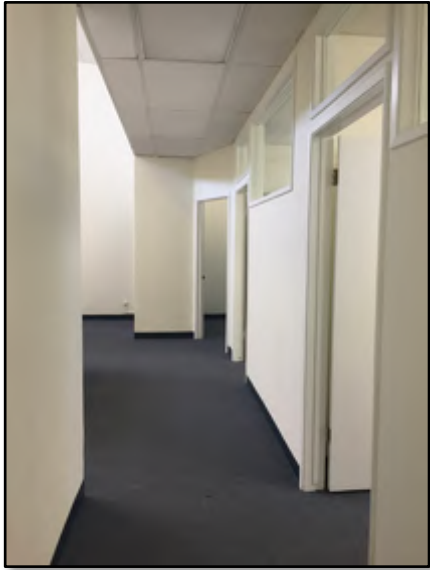
McCarty  Davis  
Commercial Real Estate

**Steve McCarty**  
mccarty@mccartydavis.com  
CalBRE#: 00977930

**Steve Davis**  
davis@mccartydavis.com  
CalBRE#: 01843738

641 Higuera Street, Suite 201  
San Luis Obispo, CA 93401  
**805.543.1801**  
[www.mccartydavis.com](http://www.mccartydavis.com)

**FOR LEASE: +/- 1,076 sq. ft. of Professional Office  
1010 South Broadway, Suite E, Santa Maria, CA 93454**



Property Characteristics	
APN:	125-221-038
Land Use Zone:	Commercial Professional office; historic overlay
Gross square feet	1,076 sq. ft.
Parking (reciprocal):	4 spaces with suite, 41 spaces on site, easy off street parking
Elevator	Service to 2 <sup>nd</sup> floor

Suite E Layout

## 2<sup>nd</sup> Floor Layout

