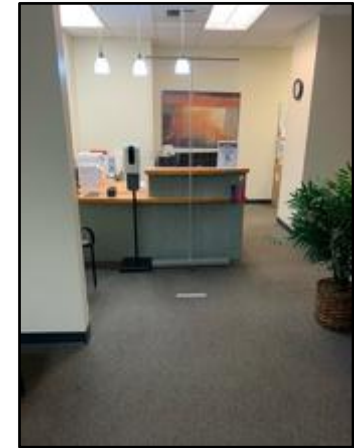
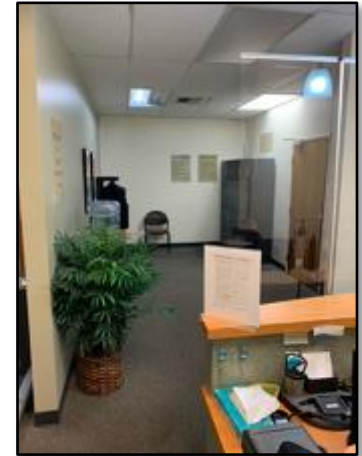
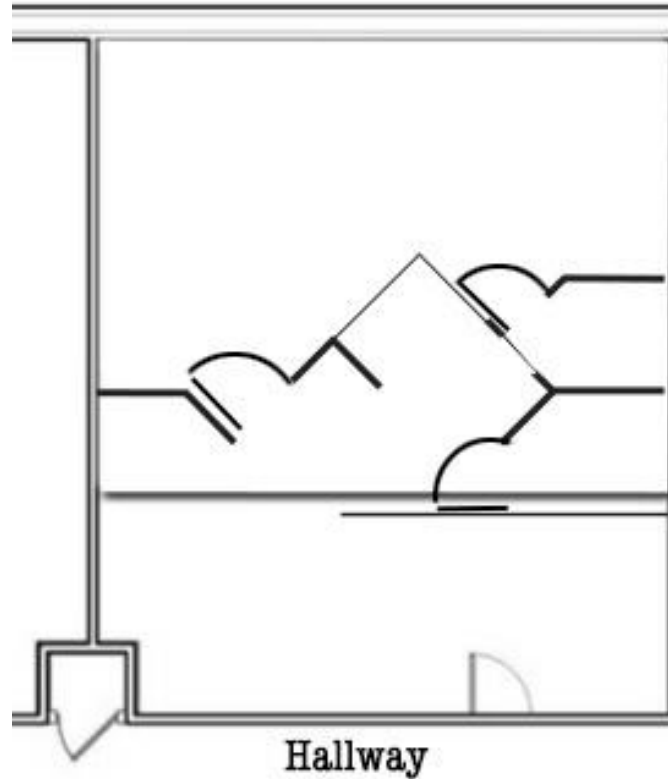


- +/- 1,035 sq. ft. of finished commercial office space for lease
- Reception area, two private offices, workstation, and large meeting room / open work area
- Shared restrooms
- Excellent central location in the heart of Santa Maria
- Can be combined with adjacent suite D for a total of 1,792 sq. ft.
- Lease rate: \$1.50 sq. ft., modified gross





Property Characteristics	
APN:	125-221-038
Land Use Zone:	Commercial Professional office; historic overlay
Gross square feet:	1,035 sq. ft.
Parking (reciprocal):	3 spaces with suite, 41 spaces on site
Elevator:	Service to 2 <sup>nd</sup> floor

