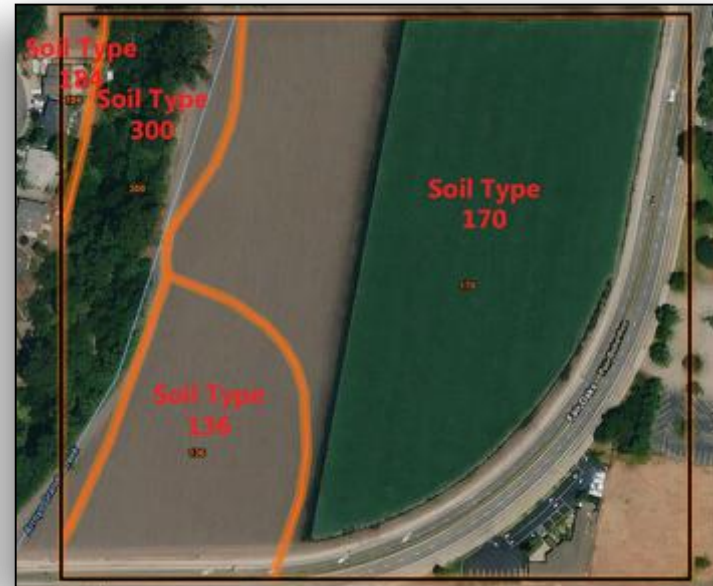
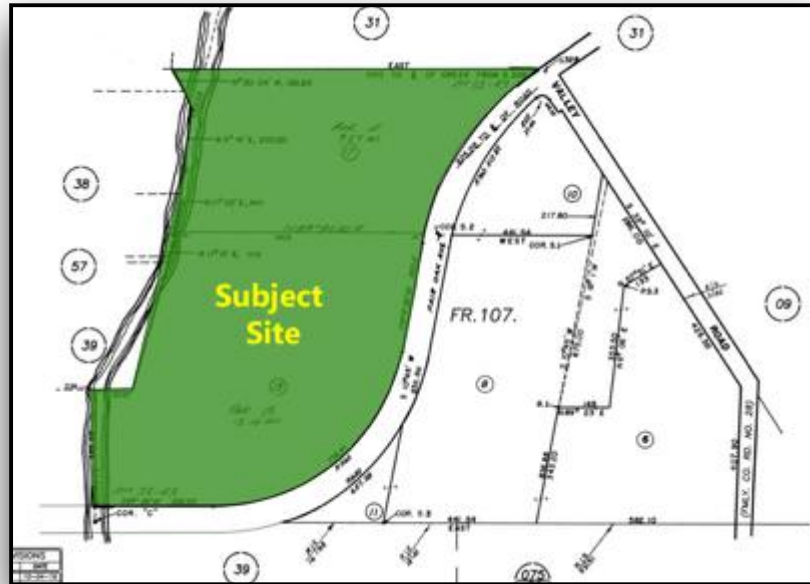


Property Overview

- Agricultural Zoned Property inside the City of Arroyo Grande, CA
- San Luis Obispo County
- Creek Adjacent
- APN: 006-341-018
- Purchase Price: \$450,000
- Call For More Details





| Parcel Characteristics | |
|-------------------------|---|
| Water: | No present on-site water, buyer to develop at its own cost. |
| Land Use Zone: | AG |
| Land Area Gross Sq. Ft. | 588,060 Sq. Ft. |
| Utilities: | Available |

| Description | |
|----------------|--|
| Soil Type #136 | Elder sandy loam, 5 to 9 percent slopes |
| Soil Type #170 | Marmel silty clay loam, drained |
| Soil Type #184 | Oceano sand, 0 to 9 percent |
| Soil Type #300 | Corducci and Typic Xerofluvents 0 to 5 percent slopes, occasionally flooded. MLRA 14 |