

Property Overview

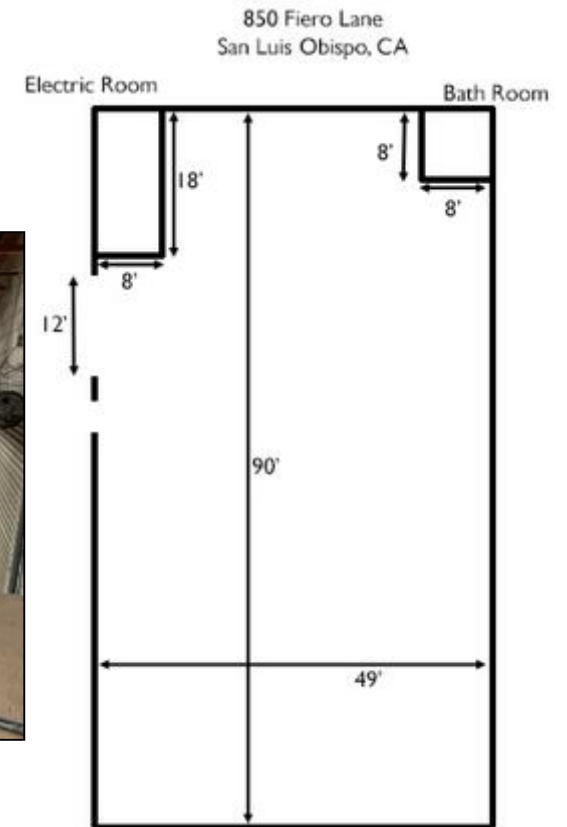
- Warehouse: +/- 4,600 sq. ft., plus
- 900 sq. ft. of mezzanine storage
- Office space: +/- 4,000 sq. ft.
**Offices have new flooring and a fresh coat of paint*
- Showroom space: +/- 800 sq. ft.
- Excellent Broad Street Frontage
- close to the SLO Airport
- 9 Parking Spaces
- \$11,750 per mo., Gross
- Available: Now

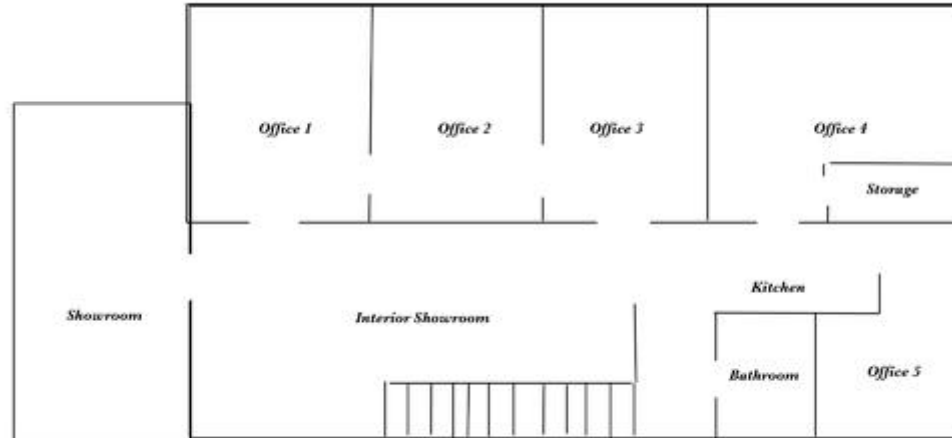


Parcel Characteristics	
APN:	076-412-001
Legal Description:	Per title report
Land Use Zone:	Industrial
Building Gross Square Feet:	+/- 9,400
Land Area Gross Square Feet:	+/- 21,932



Warehouse Space
18' ceiling height
92' long x 50' wide
One grade level 12' x 12' roll up door





Office & Showroom Space:

- 4 Exterior Offices
- Break Room
- Large work room
- Upstairs Storeroom

