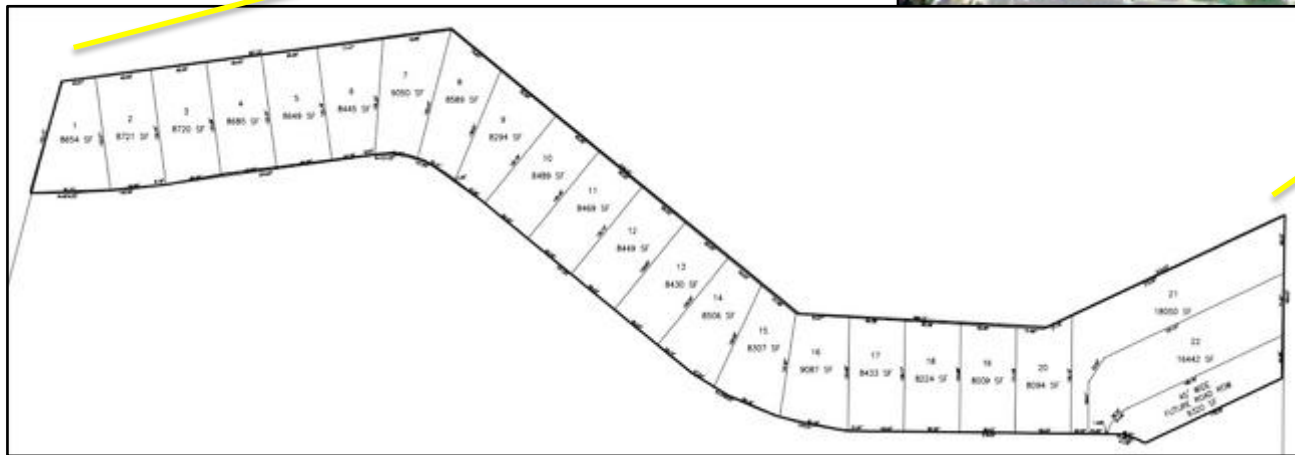


Property Overview

- Single Family and Multifamily Development
- Project in Guadalupe, CA, Santa Barbara County
- Large Lots in the Market Area
- Project Area +/- 4.87Acres
- APN: 113-030-059
- Purchase Price: \$3,680,000
- Call For More Details



Summary

The Snowy Plover parcels are the final and largest parcels offered in the established Point Sal Dunes subdivision, 20 single-family detached lots on approximately 4.87 acres with two parcels for multifamily. The property is in process of its Tentative Tract Map.

Premium large lots available, ranging from +/- 8,000 to +/- 9,000 square feet.

Unique product in the community backing up to watershed open space.

Located in the heart of the Central Coast on Highway 1, Guadalupe, County of Santa Barbara.



Property Facts

Lot Count: 22 lots ranging from +/- 8,009 to +/- 9,0878 sq. ft. on ± 4.87 gross acres.

Location: City of Guadalupe,
Santa Barbara County, CA

Product Type: Proposed **20** Large single-family detached lots. **2** Multifamily parcels allowing 4 units each.

Entitlements: Tentative map engineering in process. Curbs, gutter and street improvements in place.

Improved Infill Parcels.

Topography: The Property has relatively flat building areas.

